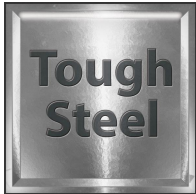


KitVault Large DVR/NVR Enclosure



Large DVR/NVR Enclosure to keep CCTV footage safe, featuring a removable Lid & Door for easy engineer access to the equipment inside



Key Features

- ✓ Tough steel build with attractive finish
- ✓ Handy bolt holes for wall mounting
- ✓ Handy fan slots for cooling equipment
- ✓ Lockable with a spare set of keys
- ✓ Multiple cable entries for in/out cabling
- ✓ Removable lid and door for easy access
- ✓ Polycarbonate viewing window
- ✓ 3 other sizes also available
- ✓ Stackable design to add extra equipment
- ✓ Suits most 16 & 32ch DVR/NVR models

Description

This large CCTV equipment enclosure is ideal for the bigger 16 and 32Ch DVR and NVR units (usually with multiple hard drives fitted) to keep them secure from tampering by staff or even intruders. The latest data protection regulations call for personal data to be protected and this includes CCTV footage; in fact the CCTV Code of Practice states that all recorded CCTV images must be...

'securely stored, where only a limited number of authorised persons may have access to them'.

The VAULT400 is a larger design to house the bigger 16 and 32ch DVRs/NVRs comfortably. Measuring W564xD597xH150mm and it can be for mounted to the wall when sat on a worktop or desk in a back room or security office so not only the recorder but the enclosure too are safe from the risk of theft.

Rear and side fan slots allow for up to 3 easy-fit fans (code FAN012) to be slotted in, ideal for keeping the hard drives inside equipment cool and running for even longer.

kitvault.com



Disclaimer

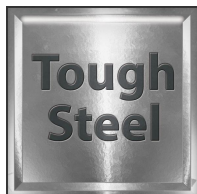
The technical specifications contained are given in good faith as being accurate but due to a continued program of improvement may change from time to time without notice. We apologise for any inconvenience due to changes of specification or errors and omissions within this document. Copyright 2021

KitVault Large DVR/NVR Enclosure



Using a KitVault enclosure is even easier than rack mounting as you have clear access to the rear of the recorder making it easy to plug in your BNC and other leads thanks to the removable lid and door that can eventually be locked in place. There's no more trying to reach into the back of racks to find the lead you're looking for.

Each model features handy fixing holes that let you bolt the enclosure to a the wall behind it making it hard for an imposter to simply pick it up and walk out with it.



The units are designed to be stackable too with feet indentations on each to give extra stability. This is ideal for hiding away ancillary equipment such as distributors, power supplies, baluns and excess cabling and helps keep the installation neat and tidy.

The Kitvault range includes 3 more sizes too!

The extra compact VAULT100 is designed for smaller 4ch or 8ch DVR and NVR units and to keep it extra secure it is designed without a viewing panel or fan slots.



The smaller VAULT200 model features a clear viewing panel and suits 4 or 8 channel models but has slightly more room around it to accommodate up to 3 extra cooling fans.

The Medium VAULT300 suits larger 8 or standard 16 channel DVR/NVR models and again has a tough polycarbonate viewing panel and 3 fan slots.

The complete KitVault range of enclosures comprises...



Extra Small - code VAULT100 (H)95mm x (W)384mm x (D)328mm
Small - code VAULT200 (H)150mm x (W)430mm x (D)368mm
Medium - code VAULT300 (H)150mm x (W)490mm x (D)471mm
Large - code VAULT400 (H)150mm x (W)564mm x (D)597mm (*this model)

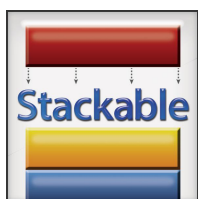
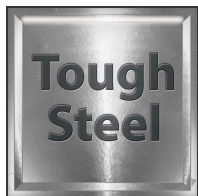
kitvault.com



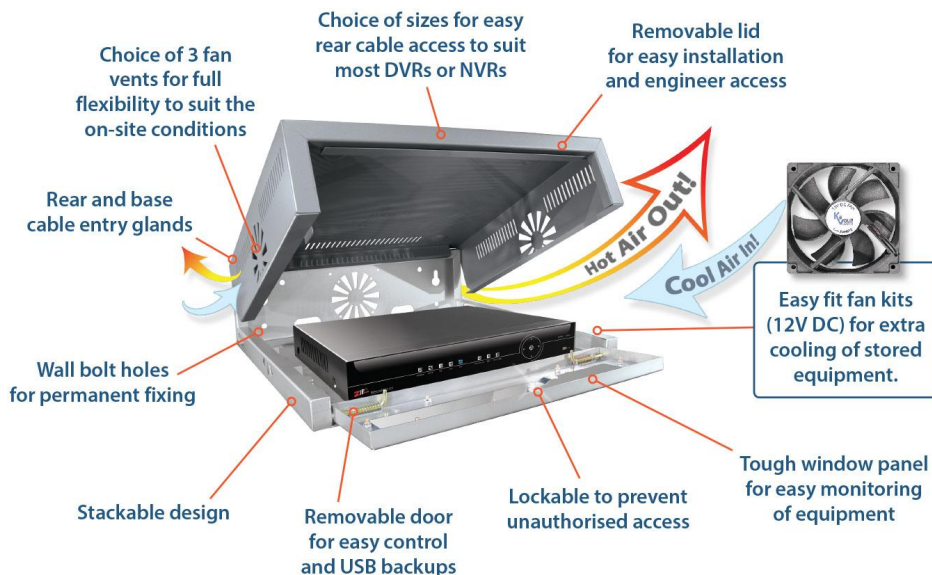
Disclaimer

The technical specifications contained are given in good faith as being accurate but due to a continued program of improvement may change from time to time without notice. We apologise for any inconvenience due to changes of specification or errors and omissions within this document. Copyright 2021

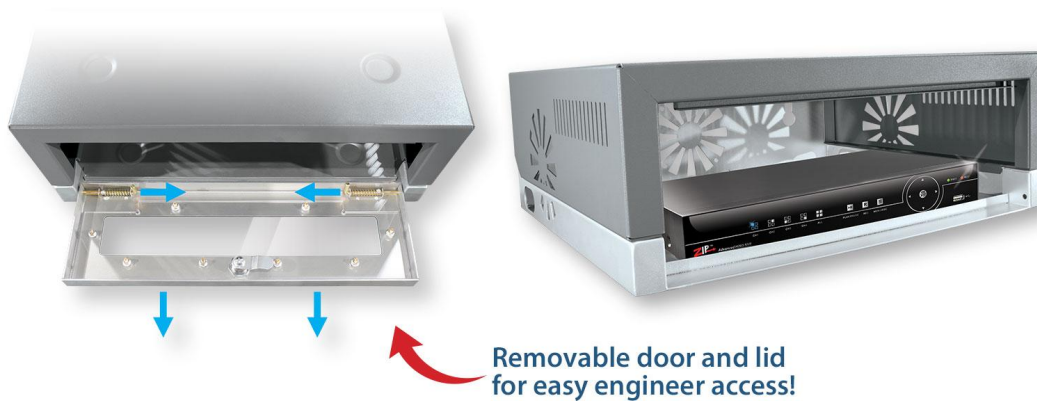
KitVault Large DVR/NVR Enclosure



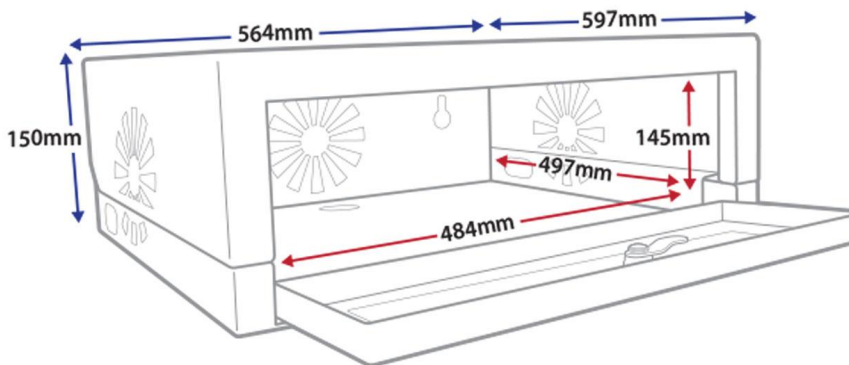
How It Works



Door Removal



Dimensions



Best Fit

MAX316 / MAX416 / ZIP226

Allow for 30mm less width and/or depth when fitting fans

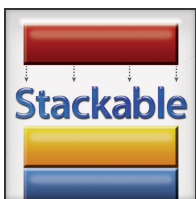
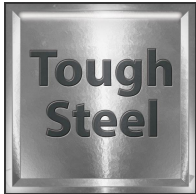
kitvault.com



Disclaimer

The technical specifications contained are given in good faith as being accurate but due to a continued program of improvement may change from time to time without notice. We apologise for any inconvenience due to changes of specification or errors and omissions within this document. Copyright 2021

KitVault Large DVR/NVR Enclosure



What's In The Box



KitVault DVR/NVR Enclosure

2 x Keys

Specification

Finish	Silver & Charcoal
Use	Internal Only
Cabling	Side, Base & Rear Entry Glands
Lockable	Hinged Front Door with Key Lock
Bolt Holes	Rear Bolt Holes
Build	1.5mm Steel
Mounting	Wall Mount
Max DVR/NVR Size	(H)145mm x (W)484mm x (D)497mm
Dimensions	(H)150mm x (W)564mm x (D)597mm

kitvault.com



Disclaimer

The technical specifications contained are given in good faith as being accurate but due to a continued program of improvement may change from time to time without notice. We apologise for any inconvenience due to changes of specification or errors and omissions within this document. Copyright 2021

Installer Details :